

# ELNet

## Energy & Power Quality Powermeter



- ELNet power multimeter is a compact, multi functional, three-phase multimeter, especially designed to suit the needs of electrical network measurement.
- ELNet is capable of measuring voltage, current, frequency, active & reactive & apparent power, power factor, and more.
- ELNet power multimeter menu screens enable easy operation and multi lingual Interface.

### Elnet PICO Three phase Energy Multimeter



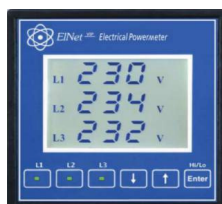
- Three phase Energy Powermeter
- Accuracy 0,2%
- 1,600 samples per cycle.
- Simple operated menus.
- up to 6 months of energy data logging.
- Build in T.O.U. Energy meter.
- Simple operated menus.
- RS-485 Communication Port.
- LCD Text display 2x12 characters.
- Simple installation – DIN Rail mounted.

### Elnet MC 12 channels Energy meter



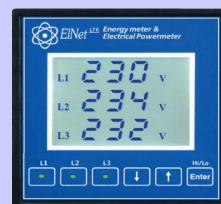
- Multi channels Energy meter.
- Up to 12 sets of three phase energy meters.
- Up to 36 single phase energy meters.
- Up to 36 Digital Inputs (alternate option)
- Up to 4 months of energy data logging.
- Electrical variables display.
- 1600 samples per cycle.
- Build in Powermeter.
- Simple operated menus.
- Accuracy 0.2-0.1 % with special calibration.
- Up to 4 months history of energy data logging.
- Ethernet (TCP/IP) and RS-485 ports.
- WEB browser capability.
- Advanced LCD Backlight display.
- Simple installation - DIN Rail mounted.

### ELNET VIP multimeter



- Three phase Multimeter
- Voltage, Current, Frequency, power & power factor Measurements.
- Peak value display of all Measurements.
- Power demand for current and real power.
- Phase absence & disorder relay.
- Accuracy 0.5% in nominal range.
- LCD back light display.
- Simple installation - panel mounted.

### Elnet LTE Energy Multimeter



- Three phase Multimeter
- Voltage, Current, Frequency, power & power factor Measurements.
- Energy measurement
- Peak value display of all measurements.
- Power demand for current and real power.
- Phase absence & disorder relay (option).
- Accuracy 0.5% in nominal range.
- LCD back light display.
- RS485 communication module for MODBUS.
- Simple installation - panel mounted.

### EINet LTC 16 Power factor controller



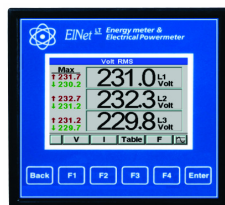
- Up to 16 switching stages relays.
- Real time Power factor display.
- Voltage, Current, Power Factor & Harmonics measurements.
- Weekly & monthly Power Factor display.
- Auto detection of capacitors size.
- Voltage & Current limits settings.
- Auto detection of capacity size.
- Harmonic's protection.
- Voltage & Current limits setting.
- Accuracy 0.2 %
- Accuracy 0.1 % with special calibration can be ordered.
- 1.600 samples per cycle.
- Up to 6 months of energy data logging.
- High resolution display (128x64).
- Multilingual simple operated menus.
- RS- 485 Communication Port.
- Ethernet (TCP/IP) communication port (optional).
- Dimensions: 144x 144 x 100 mm.

### EINet PFC Energy & Power analyzer with Power factor controller



- Simple operated menus.
- Multilingual support.
- Accuracy 0.5% with special calibration.
- State of the art Graphic LCD
- High resolutions display 128X64 pixels.
- Displays of Waveform and Bar graph.
- Simple installation- Panel mounted.
- Build in Power factor controller.
- Switching up to 6 stages of capacitor banks.
- Auto detection capacitors size.
- Real time Power factor display.
- Weekly & monthly Power factor display.
- High THD limits setting.
- High/Low voltage limits setting.
- Low load limit setting.
- Dimension: 96x96 mm

### EINet LT Energy & Power analyzer



- Simple operated menus.
- Multilingual support.
- Up to One year of energy data logging.
- Displays up to 64th Harmonic in Waveform or Graphic.
- 1600 samples per cycle.
- Accuracy 0.2 %.
- Build in T.O.U. Energy meter.
- RS485 Communication Port (MODBUS, Bacnet MS/TP).
- State of the art Graphic LCD
- Modern 320 x 240 LCD display.
- Displays of Waveform and Bar graph.
- Simple installation- Panel mounted. Dimension: 96x96 mm.
- Flash memory stores 6 months of energy.

#### LT TCP/IP

- Option: TCP/IP communication port + WEB server BacNet TCP/IP

### EINet GR Energy & Power analyzer



- Simple operated menus.
- Multilingual support.
- All Data daily logged - up to 2 years.
- Harmonics - up to 64th Harmonic.
- 1600 samples per cycle.
- Accuracy 0.2 %
- 0.1% special calibration can be ordered.
- Up to one-year Alarms log.
- Ethernet (TCP/IP) & RS232/485 ports
- Modern 320x234 LCD display.
- Waveform and Bar Displays.
- Simple installation - panel mounted.
- Programmable Relays.
- Build in WEB server - Web browser capability.
- BacNet TCP/IP, MODBUS, BacNet MS/TP

#### ELNET PQ (additional to GR-C)

- The main characteristics of the device are the same as for Elnet GR-C, with the difference that the instrument is capable to prepare reports of the quality of the electrical energy. The report meet the energy standard EN 50160.

### Elnet Billing / Elnet WEB PQ

Elnet Billing is a user friendly software package that is especially designed for logging electrical energy consumption from Elnet Powermeters and generating electrical bills.

Elnet Billing provides detailed energy reports on a daily, monthly and annual basis, as well as advanced T.O.U. billing capabilities. Data can be exported to Excel data base.



### Elnet Logger

Elnet Logger is a user friendly software package that is especially designed for monitoring and data logging from electrical networks.

- Elnet Powermeters Data Logging
- Graphic Display of Trends over time
- Display of Real Time Measurements
- User-friendly Interface

